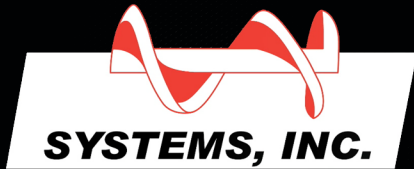


SANI-TECH



Auger Style Refuse and Recycling Compactors

Receiver Bins for Auger Compactors

Long-Lasting Compaction Bins to fit any application!

Efficient ~ Heavy-Duty ~ Quality ~ Durable

Roll-Off Bins



Front Load Bins



ROLL-OFF BIN FEATURES

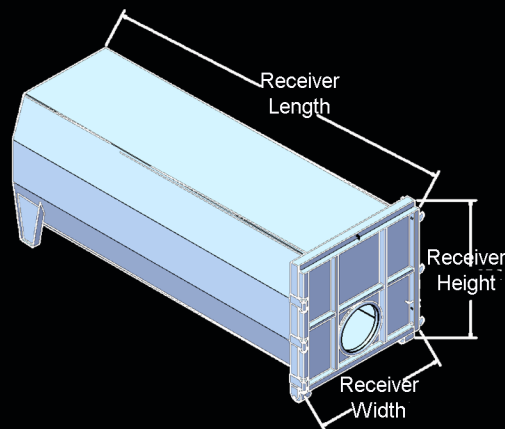
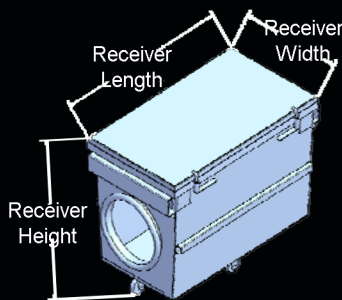
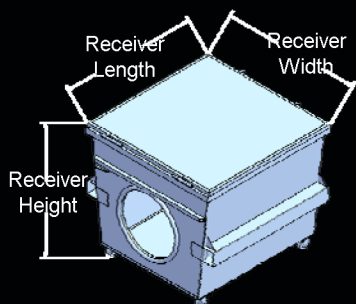
- Small Round Bin connection to Compactor
- 10 to 47 Cubic Yard Capacities
- Triple Door Latch System
- Heavy-Duty Smooth wall Octagon Construction
- Customer Specified Understructure
- Canvas Bin Hole Cover, Standard
- Watertight Flip-Closed Steel Cover, Optional
- Two 8 5/8" Ground Rollers, Two Legs
- Customizable Options (See reverse)

FRONT-LOAD BIN FEATURES

- Small Round Bin connection to Compactor
- 2 to 6 Cubic Yard Capacities
- Steel Lid with 2-Lid Clamps
- Side or End connections (to Compactor)
- Lift Pockets designed for standard Front Load Trucks
- Watertight Flip-Closed Steel Cover, Optional
- Heavy-Duty 6" roller bearing Rigid & Caster Wheels
- Customizable Options (See reverse)

COST SAVINGS IS THE BOTTOM LINE

Receiver Bins for Auger Compactors



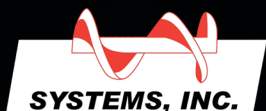
Front Load				
Bins	Length	Width	Height	Weight
2 Cubic Yard	6' 8"	47"	5' 0"	1240 lbs.
3 Cubic Yard	6' 8"	47"	5' 3"	1360 lbs.
4 Cubic Yard	6' 8"	47"	6' 8"	1420 lbs.
4 Cubic Yard	6' 4"	6' 8"	5' 5"	1420 lbs.
5 Cubic Yard	6' 4"	6' 8"	5' 11"	1480 lbs.
6 Cubic Yard	6' 4"	6' 8"	6' 5"	1550 lbs.

OPTIONAL FEATURES

- 100% Liquid Tight Door Seal
- Hinged Metal Auger Hole Cover with Seal
- Liquid Drain Systems
- Fire Hose Ports
- Bin Heat Systems
- High Slip Interior Coating
- Island Guides and Stops
- Channel Guides
- 4 Wheels—No Legs
- Custom Understructure
- Custom Paint Colors
- Painted Bin Interiors
- **NEW** - Bin Hole Reducing Diaphragm*

Consult factory for any custom options.

SANI-TECH



Auger Style Refuse and Recycling Compactors

ROLL-OFF BIN SPECIFICATIONS

- Body and End Plate Construction:
7 Gauge Plate A36 Steel
- Frame Construction:
C4 x 5.4 Structural Channels
- Rail Construction:
6" x 2" x .250 Rectangular Tubing
- Door Skin:
10 Gauge Steel
- Door Frame Assembly:
4" x 2" x .180 Rectangular Tubing
& 4" x 4" x .180 Square Tubing

Roll Off Bins	Overall Bin Length	Bin Width	Rail to Top Height	Ground to Top Height	Weight
10 Cubic Yard CCS	9' 10"	7' 4"	7' 0"	7' 5"	3500 lbs.
15 Cubic Yard CCS	14' 10"	7' 4"	7' 0"	7' 5"	4100 lbs.
15 Cubic Yard CC	9' 10"	8' 5"	8' 0"	8' 5"	4100 lbs.
20 Cubic Yard CCS	18' - 10"	7' 4"	7' 0"	7' 5"	5000 lbs.
20 Cubic Yard CC	12' - 10"	8' 5"	8' 0"	8' 5"	5000 lbs.
25 Cubic Yard CC	15' - 10"	8' 5"	8' 0"	8' 5"	5800 lbs.
25 Cubic Yard CCL	13' - 10"	8' 5"	9' 0"	9' 5"	5800 lbs.
30 Cubic Yard CC	18' - 10"	8' 5"	8' 0"	8' 5"	6600 lbs.
30 Cubic Yard CCL	16' - 10"	8' 5"	9' 0"	9' 5"	6600 lbs.
35 Cubic Yard CC	20' - 10"	8' 5"	8' 0"	8' 5"	7100 lbs.
35 Cubic Yard CCL	18' - 10"	8' 5"	9' 0"	9' 5"	7100 lbs.
40 Cubic Yard CC	22' - 10"	8' 5"	8' 0"	8' 5"	7700 lbs.
40 Cubic Yard CCL	20' - 10"	8' 5"	9' 0"	9' 5"	7700 lbs.
47 Cubic Yard CCL	22' - 8"	8' 5"	9' 0"	9' 5"	7800 lbs.