

# SANI-TECH®



## Receiver Bins for Auger Compactors

Compaction Bins of all sizes to fit any application!

### ROLL-OFF BINS



- ◆ Rugged Long Lasting Construction
- ◆ Durable Industrial Design
- ◆ Highest Quality Materials

#### Options:



Hinged Metal Auger Hole Cover



Bin Liquid Drain



Four Wheels



**NEW** - Bin Hole Reducing Diaphragm\*



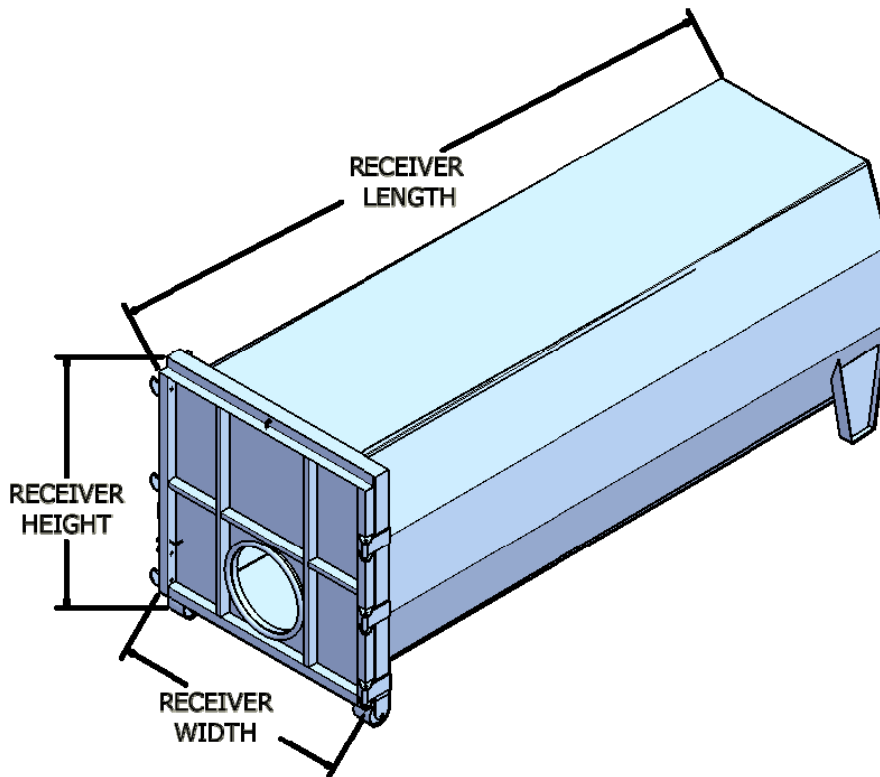
Fire Hose Ports



Hook Lift

SANI-TECH SYSTEMS • PO BOX 444 • DUVALL, WA 98019 • (425) 788-6444 • FAX (425) 844-8625

# Roll-Off Bins for Auger Compactors



## STANDARD FEATURES

- Heavy-Duty Octagon Construction
- Customer Specified Understructure
- Canvas Bin Hole Cover
- Two 8 5/8" Ground Rollers
- Two Steel Legs at Front
- Triple Door Latch System

## BIN SPECIFICATIONS

- Body and End Plate Construction: 7 Gauge Plate A36 Steel
- Frame Construction: C4 x 5.4 Structural Channels
- Rail Construction: 6" x 2" x .250 Rectangular Tubing
- Door Skin: 10 Gauge Steel
- Door Frame Assembly: 4" x 2" x .180 Rectangular Tubing & 4" x 4" x .180 Square Tubing

## OPTIONAL FEATURES

- 100% Liquid Tight Door Seal
- Hinged Metal Auger Hole Cover with Seal
- Liquid Drain Systems
- Fire Hose Ports
- Bin Heat Systems
- High Slip Interior Coating
- Island Guides and Stops
- Channel Guides
- 4 Wheels—No Legs
- Custom Understructure
- Custom Paint Colors
- Painted Bin Interiors
- **NEW** - Bin Hole Reducing Diaphragm\*

Custom applications accepted.  
Call Today and let us design

Roll Off Bins	Overall Bin Length	Bin Width	Rail to Top Height	Ground to Top Height	Weight
10 Cubic Yard CCS	9' 10"	7' 4"	7' 0"	7' 5"	3500 lbs.
15 Cubic Yard CCS	14' 10"	7' 4"	7' 0"	7' 5"	4100 lbs.
15 Cubic Yard CC	9' 10"	8' 5"	8' 0"	8' 5"	4100 lbs.
20 Cubic Yard CCS	18' - 10"	7' 4"	7' 0"	7' 5"	5000 lbs.
20 Cubic Yard CC	12' - 10"	8' 5"	8' 0"	8' 5"	5000 lbs.
25 Cubic Yard CC	15' - 10"	8' 5"	8' 0"	8' 5"	5800 lbs.
25 Cubic Yard CCL	13' - 10"	8' 5"	9' 0"	9' 5"	5800 lbs.
30 Cubic Yard CC	18' - 10"	8' 5"	8' 0"	8' 5"	6600 lbs.
30 Cubic Yard CCL	16' - 10"	8' 5"	9' 0"	9' 5"	6600 lbs.
35 Cubic Yard CC	20' - 10"	8' 5"	8' 0"	8' 5"	7100 lbs.
35 Cubic Yard CCL	18' - 10"	8' 5"	9' 0"	9' 5"	7100 lbs.
40 Cubic Yard CC	22' - 10"	8' 5"	8' 0"	8' 5"	7700 lbs.
40 Cubic Yard CCL	20' - 10"	8' 5"	9' 0"	9' 5"	7700 lbs.
47 Cubic Yard CCL	22' - 8"	8' 5"	9' 0"	9' 5"	7800 lbs.



Sani-Tech Systems Inc.  
PO Box 444, Duvall, WA 98019  
(425) 788-6444, Fax: (425) 844-8625  
E-mail: compactorinfo@sanitech.net  
Web: www.sanitech.net

\*See Bin Hole Reducing Diaphragm Brochure for More Information  
\*Patent Pending US12/880,440 - Canada: 2716153