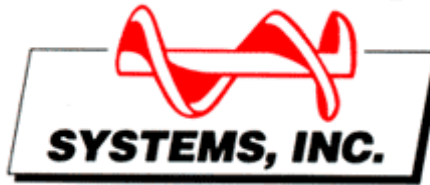


SANI-TECH[®]



“THE AUGER IS THE ANSWER”

MODEL ST1046/36

HIGH DENSITY STATIONARY RECYCLING COMPACTOR



**THE SANI-TECH AUGER
DOES IT ALL**

SANI-TECH augers pre-crush and compact in one powerful motion. While processing material, the auger continuously runs in a forward direction, crushing and reducing the size of what it is fed. This enables it to compact up to five times faster than conventional hydraulic compactors.

The Sani-Tech Model ST1046/36 10HP Corrugate Compactor you can drastically increase your net payload per haul while saving you labor, time and floor space.

**NO MORE BALING!
NO NEED TO FLATTEN BOXES AND CARTONS!
NO NEED TO STORE BALES FOR PICK-UP!
NO MESSY HYDRAULIC FLUIDS TO MAINTAIN!
GREATLY REDUCED FIRE HAZARD!
GET UP TO 400 LBS PER CUBIC YARD OF COMPACTION!**

With the Sani-Tech auger compactor all you have to do is throw the material into the compactor, turn it on and walk away. When you return, the material will be safely processed into a receiver bin and the compactor will be ready for more.

COST SAVINGS IS THE BOTTOM LINE

**Substantial reductions in operating costs are obtained by:
increased compaction, labor savings and reduced hauls.**

STATIONARY COMPACTOR MODEL ST1046/36

SPECIFICATIONS

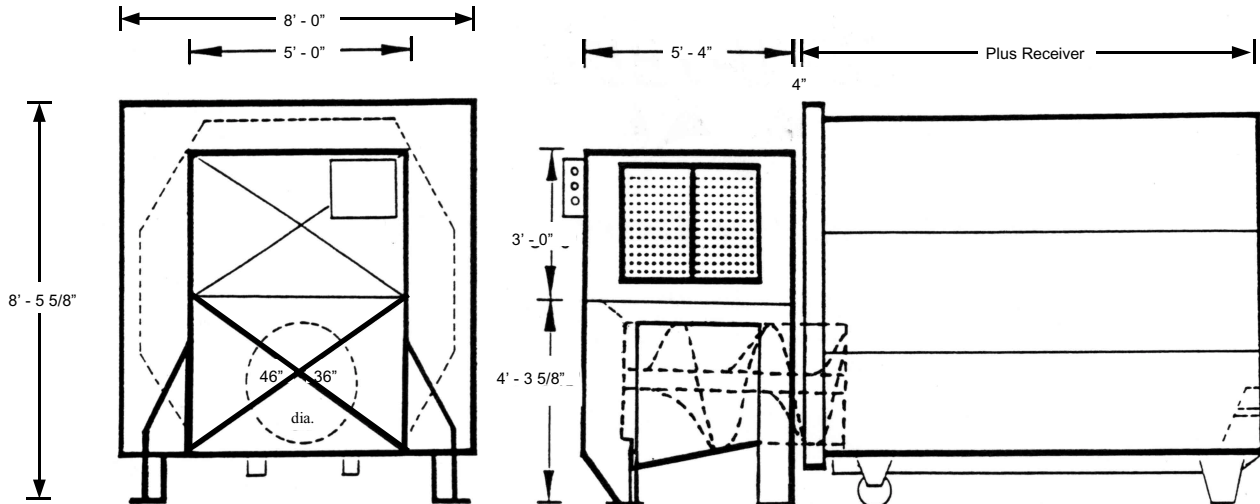
Hopper Capacity:	4.5 Cubic Yards
Bi-fold Door Size:	36" W X 30" H
Auger Diameter:	Tapered 46" to 36"
Auger RPM:	8
Motor:	10 HP
Displacement Rate:	270 cu. yds./hr.
Electrical:	240v/480v - 3 Phase
Amperage:	30a / 15a
Drive:	Electro-mechanical
Control Panel:	UL listed 110 volt
Weight:	4100#
Auger Torque:	204,000 In. Lbs.

DIMENSIONS

Model/ Cu. Yd.	Overall Length	Receiver Body Length	Tare Wgt.
ST1046/36-15	15' - 4"	9' - 8"	4,100 lbs.
ST1046/36-20	18' - 4"	12' - 8"	4,700 lbs.
ST1046/36-25	21' - 4"	15' - 8"	5,400 lbs.
ST1046/36-30	24' - 4"	18' - 8"	5,800 lbs.
ST1046/36-35*	26' - 2"	20' - 6"	6,600 lbs.
ST1046/36-40*	28' - 2"	22' - 6"	7,200 lbs.

For special orders consult factory
 * Request prior confirmation with refuse hauler regarding length of this unit.

Specifications are subject to change without notice to accommodate design



STANDARD FEATURES

- ◆ Abrasion Resistant Alloy Steel Auger
- ◆ Replaceable Cast Auger End Wear Plate
- ◆ Adjustable Running Time
- ◆ Bin Near Full Indicator
- ◆ "Almond" Machinery Enamel Finish
- ◆ Liquid Tight Auger Chamber
- ◆ Adjustable Compaction Density
- ◆ Safety Interlock System
- ◆ Keylock Start/Reverse Switch
- ◆ Mushroom Stop Switch
- ◆ Electric Lubrication System

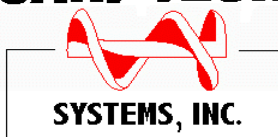
OPTIONAL FEATURES

- ◆ Odor / Insect Control
- ◆ Cart Dumper
- ◆ Custom Paint Colors
- ◆ Exhaust Fans
- ◆ Fire Suppression Systems
- ◆ Custom Hood Designs
- ◆ Liquid Drain System
- ◆ Bin Gone Sensor
- ◆ Photo Eye Automatic Start

Consult factory for any custom design work.

3hp to 40hp models available for additional applications.

SANI-TECH®



DEALER:

PO. Box 444 Duvall, WA. 98019
 (425) 788-6444 Fax: (425) 844-8625
 E-Mail: compactorinfo@sanitech.net
 Web Site: sanitech.net